

MAY 2024 REPORT

ALPEX DAM – Monthly Results

- In May 2024 a total volume of **77,647 MWh** was traded on ALPEX DAM, for the **Albania Bidding Zone**, with an average Market Clearing Price of **70.21 €/MWh**.
- In May 2024 a total volume of **99,069 MWh** was traded on ALPEX DAM, for the **Kosovo Bidding Zone**, with an average Market Clearing Price of **70.21 €/MWh**.
- In May 2024, in total, the flow of energy from the bidding zone of Albania towards the bidding zone of Kosovo was **983.82 MWh**, while from the bidding zone of Kosovo towards the bidding zone of Albania it was **41,825.99 MWh**.

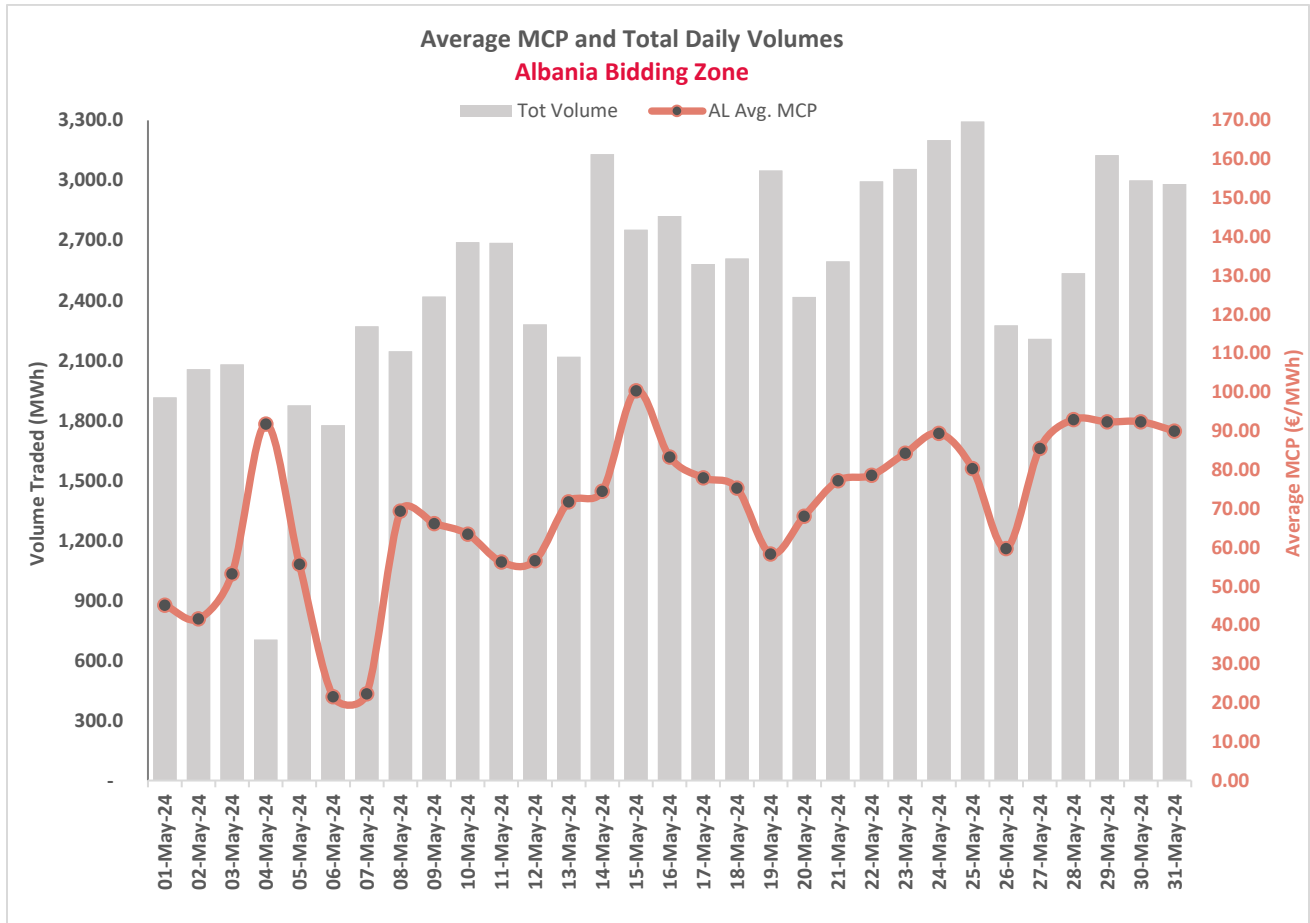
New Exchange Members

In May, ALPEX welcomed **SPV BLUE 1 j.s.c** as the newest members on Day-Ahead Market, for Kosovo Bidding Zone.

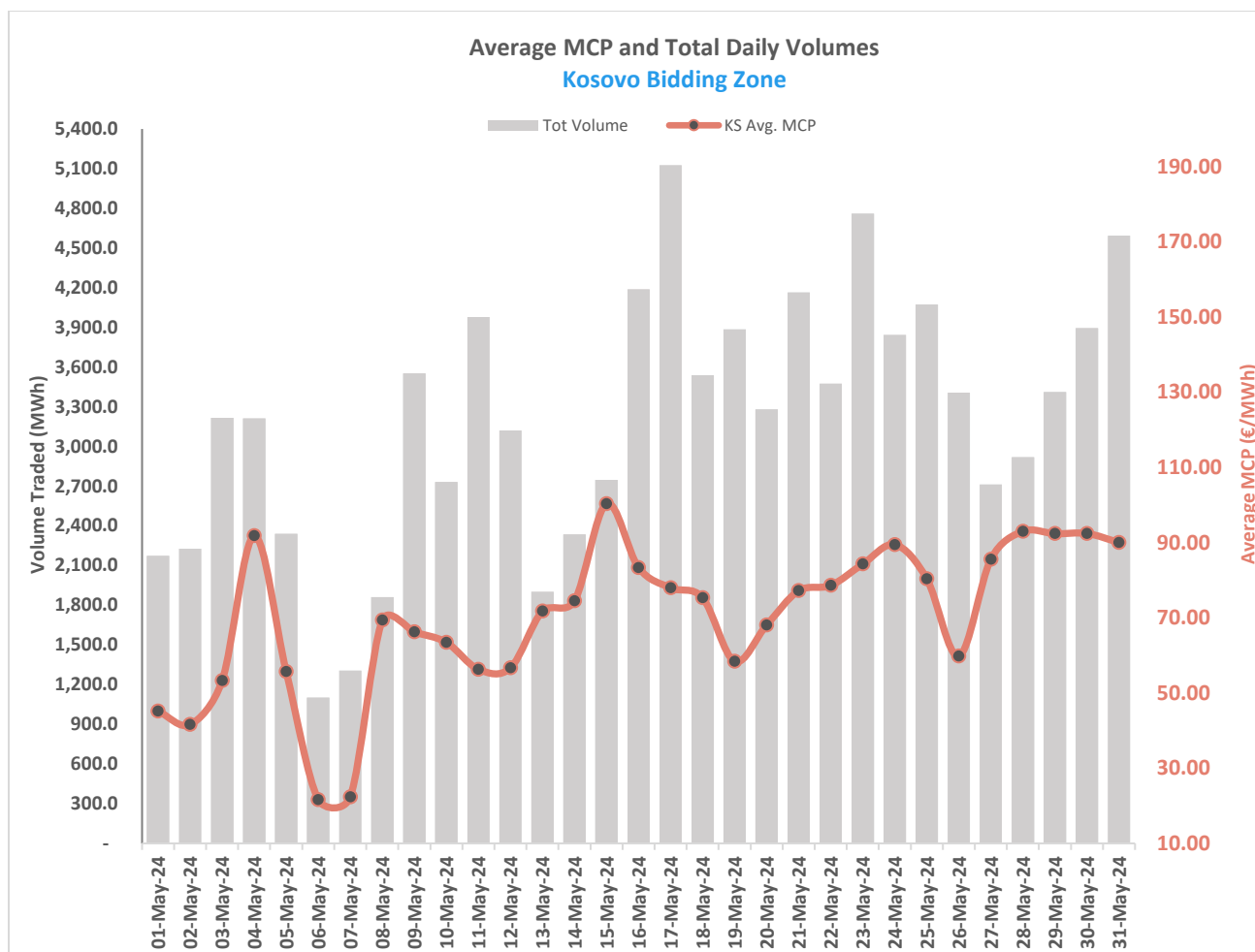
May 2024	Price (€/MWh)	AL Volumes (MWh)	KS Volumes (MWh)
Daily Average	€ 70.21	2,505	3,196
Daily Max.	€ 215.00	3,293	5,126
Daily Min.	-€ 500.00	705	1,102
Total		77,647	99,069

Albania Bidding Zone			
Month of Trades	Trades (MWh)	Invoiced Buy-Sell (€)	Avg. DAM Price (€/MWh)
May 2023	112,419.7	€ 21,109,324.61	€ 92.93
May 2024	74,071	€ 11,775,472	€ 70.21
Variance	↓ -34.11%	↓ -44.22%	↓ -24.45%

Kosovo Bidding Zone			
Month of Trades	Trades (MWh)	Invoiced Buy-Sell (€)	Avg. DAM Price (€/MWh)
April 2024	83,735	€ 10,159,293	€ 61.04
May 2024	99,069	€ 15,154,999	€ 70.21
Variance	↑ 18.31%	↑ 49.1%	↑ 15.02%



Albania Bidding Zone												
Average hourly Volumes and Prices												
MTU	00-01	01-02	02-03	03-04	04-05	05-06	06-07	07-08	08-09	09-10	10-11	11-12
Volumes (MWh)	76.72	101.10	108.01	110.02	110.66	107.11	96.20	96.57	113.31	105.03	104.24	103.86
Price (€/MWh)	80.40	74.02	68.47	68.11	68.81	72.87	45.19	77.85	65.74	47.55	59.29	50.02
MTU	12-13	13-14	14-15	15-16	16-17	17-18	18-19	19-20	20-21	21-22	22-23	23-24
Volumes (MWh)	103.23	104.19	105.01	105.04	98.94	101.28	113.11	118.68	115.56	106.42	101.41	99.08
Price (€/MWh)	42.79	39.77	41.25	47.21	56.87	73.75	85.69	109.20	128.57	112.47	88.90	80.14



Kosovo Bidding Zone												
Average hourly Volumes and Prices												
MTU	00-01	01-02	02-03	03-04	04-05	05-06	06-07	07-08	08-09	09-10	10-11	11-12
Volumes (MWh)	109.54	138.33	149.75	154.05	153.07	151.09	141.33	142.98	143.88	118.10	108.37	110.43
Price (€/MWh)	80.40	74.02	68.47	68.11	68.81	72.87	45.19	77.85	65.74	47.55	59.29	50.02
MTU	12-13	13-14	14-15	15-16	16-17	17-18	18-19	19-20	20-21	21-22	22-23	23-24
Volumes (MWh)	116.22	115.91	120.44	124.29	119.44	121.59	135.59	154.75	151.74	144.72	136.71	133.43
Price (€/MWh)	42.79	39.77	41.25	47.21	56.87	73.75	85.69	109.20	128.57	112.47	88.90	80.14